

Industrial Duty Hand Truck

BEST

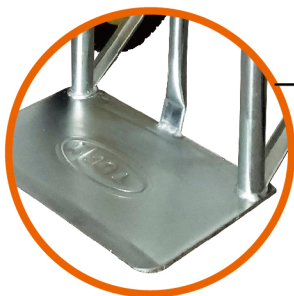
DESIGNED TO WORK

- **Heavy Duty 1 1/4" O/D 14 gauge steel tube**
- **Powder-coated/Zinc finish option**
- **Heavy Duty axle assembly**

- Patented built-in rim support heavy loads
- "Real Feel" flat-free wheels for low rolling resistance

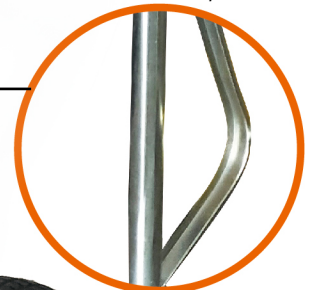


- Chamfered base plate with beveled edge allows you to get under loads with ease



- P-handle for increased maneuverability
- Ergonomically designed to reduce fatigue

- Channel steel axle brackets for increased strength and stability



TX800P-Z

TUF-FORT MANUFACTURING INC.

609 Colby Drive, Waterloo, Ontario, Canada N2V 1A1
Tel: 519-746-1920 / Fax: 519-746-4900 E-mail: support@tufx-fort.com

TUF-TRUSTOP INC. / QINGDAO TRUSTOP TOOLS CO., LTD.

Zhangjialou, Huangdao, Qingdao, China
Tel: 86-532-86899949 / Fax: 86-532-86888559 E-mail: support@tufx-trustop.com

tufx-fort.com
trustoptools.com



Industrial Duty Hand Truck

BEST

TX600L

43" Height
23" Width
8" x 14" Base plate
10" PU wheels



- 600 lb loop handle
- Channel steel axle brackets
- "Real Feel" flat free wheels
- Chamfered base plate
- 1 1/8" O/D 16 gauge steel tubular frame
- Powder-coated finish

TX600P

51" Height
23" Width
8" x 14" Base plate
10" PU wheels



- 600 lb P-handle
- Channel steel axle brackets
- "Real Feel" flat free wheels
- Chamfered base plate
- 1 1/8" O/D 16 gauge steel tubular frame
- Powder-coated finish

TX600C

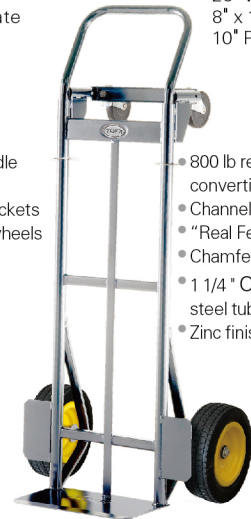
50" Height
23" Width
8" x 14" Base plate
10" PU wheels



- 600 lb removable handle convertible
- Channel steel axle brackets
- "Real Feel" flat free wheels
- Chamfered base plate
- 1 1/4" O/D 16 gauge steel tubular frame
- Powder-coated finish

TX800C-Z

50" Height
23" Width
8" x 14" Base plate
10" PU wheels



- 800 lb removable handle convertible
- Channel steel axle brackets
- "Real Feel" flat free wheels
- Chamfered base plate
- 1 1/4" O/D 14 gauge steel tubular frame
- Zinc finish

TX800TM

44" Height
23" Width
8" x 16" Base plate
20" Nose extension
10" PU wheels



- 800 lb Twin handle masonry truck
- Channel steel axle brackets
- "Real Feel" flat free wheels
- Heavy duty wheel guards
- Chamfered base plate
- 1 3/16" O/D 16 gauge steel tubular frame
- Powder-coated finish

TX1000T-Z

45" Height
23" Width
8" x 14" Base plate
10" PU wheels



- 1000 lb Twin handle
- Channel steel axle brackets
- "Real Feel" flat free wheels
- Chamfered base plate
- Heavy duty 1 1/4" O/D 14 gauge steel tubular frame
- Zinc finish

TX800P

51" Height
23" Width
8" x 14" Base plate
10" PU wheels



- 800 lb loop handle
- Channel steel axle brackets
- "Real Feel" flat free wheels
- Chamfered base plate
- Heavy duty 1 1/4" O/D 16 gauge steel tubular frame
- Powder-coated finish

TX1000T

45" Height
23" Width
8" x 14" Base plate
10" PU wheels



- 1000 lb Twin handle
- Channel steel axle brackets
- "Real Feel" flat free wheels
- Chamfered base plate
- Heavy duty 1 1/4" O/D 14 gauge steel tubular frame
- Powder-coated finish

TUF-FORT MANUFACTURING INC.

609 Colby Drive, Waterloo, Ontario, Canada N2V 1A1
Tel: 519-746-1920 / Fax: 519-746-4900 E-mail: support@tufx-fort.com

TUF-FORT TRUSTOP INC. / QINGDAO TRUSTOP TOOLS CO., LTD.

Zhangjialou, Huangdao, Qingdao, China
Tel: 86-532-86899949 / Fax: 86-532-86888559 E-mail: support@tufx-trustop.com

tufx-fort.com
trustoptools.com

